

12ST-1 – DESCRIPTION

		RL	SN	K	FF	
<p>Graphite Guitar 12ST-1 – Acoustic. Has top #G-26. This top was marked 162 grams rough trimmed. This top was actually 163.5 grams rough trimmed. This top became 150.1 grams final trimmed – for large rim (i.e.: small top). This top has a K of .76 topside, .89 bottom. Bridge weight – 26 ? grams – about 10 more than the 6-string bridge – this was the lightest weight production bridge. We're using washer ( wt.) instead of a reinforcing pad for the bolts ( wt.).                  232 grams      300 w/rim</p>						
<hr/>						
#12ST-1-8	Bracing modified to accommodate the two hole configuration. – Also added continuation of the 2 outboard braces up to the neck block. 6/17/75      Acoustic saddle, 1 shim.	.25 .50 1.0	.016/.016 .033/.033 .068/.067	.014/.013 .030/.026 .068/.055 slides slides	.0315 x 2 = .063 no strings patch on	
#12ST-1-7	Top only – with bridge and braces. Cut down braces #2, 3 and 11, 12 to .475" – radius south ends of 4, 5, 6, 7, 8. Not enough change – didn't do North.	.25 .50 1.0	.018/.015 .034/.030 .066/.062	.009/ .017/ .037/	@ 2# clamped .0065x10 = .065 @ 4# .013 x 5 = .065	
#12ST-1-6	Top Replaced braces #4, 6, 8, 9 with .600" and #5 and 7 with .250".	.25 .50 1.0	.017/.015 .034/.031 .065/.063	.009/.007 .017/.015 .038/.032	@ 2# clamped .00625x10 = .062 @ 4# .0125 x 5 = .0625	
#12ST-1-5	Top Ground braces #2 and 3 and 11 and 12. Replaced #1 with .500" square end brace. Moment test terrible – what caused it? – check angulation accurately.	.25 .50 1.0	.020/.017 .038/.036 .073/.071	.014/.012 .031/.025 .068/.055	@ 2# (clamped) .007 x 10 = .070 @ 4# .014 x 5 = .070	
#12ST-1-4	Top Ground braces down – see chart – ends untouched. K @ 2# (no clamps) .010 x 10 = .100      no clamps 4# (no clamps) .019 x 5 = .095      has tape ■ K @ 2# (heavily clamped) .007 x 10 = .070 4# (heavily clamped) .014 x 5 = .070	.25 .50 1.0	.014/.016 .031/.034 .063/.065	.009/.008 .018/.016 .038/.034	see copy ←	

#12ST-1-3 Top

Monday, February 24, 1975

Trimmed braces #3 and #11 to 9'16" height and contoured ends. Note the stiffness gained over the weekend.

.25  
.50  
1.0

.016/.013  
.031/.028  
.061/.058

.009/.008  
.018/.016  
.037/.032

@ 2#  
.006 x 10  
= .060  
  
@ 4#  
.012 x 5  
= .060

#12ST-1-2 Top

Friday, February 21, 1975

Added 1/8" x 3/4" h braces to the full length of braces #3 and #11.

This is where I concluded the tops were slipping in the K tester.

Note: Music wire exerts .020" down pressure.

.25  
.50  
1.0

.016/.014  
.033/.030  
.065/.063

.011/.012  
.023/.024  
.055/.050

@ 2#  
.006 x 10  
= .060  
  
@ 4#  
.0125 x 5  
= .0625

#12ST-1-1

After trimming braces first reading:

K @ 2# .024 x 10 = .140

4# .026 x 5 = .130

--- Impossible! Everything is too loose. The top must be slipping in the fixture. Recheck, using double backed tape and many clamps.

.25  
.50  
1.0

.023/.021  
.045/.042  
.086/.090

.018/.014  
.038/.028  
.076/.061

recheck  
@ 2#  
.013 x 10  
= .130  
  
@ 4#  
.025 x 5  
= .125

#12ST-1 Top

Thursday, February 20, 1975

Original K of top .76 top  
.89 bottom

	RL	SN	K	FF	
#12ST-1-3 Top Monday, February 24, 1975 Trimmed braces #3 and #11 to 9'16" height and contoured ends. Note the stiffness gained over the weekend.	.25 .50 1.0	.016/.013 .031/.028 .061/.058	.009/.008 .018/.016 .037/.032	@ 2# .006 x 10 = .060  @ 4# .012 x 5 = .060	
#12ST-1-2 Top Friday, February 21, 1975 Added 1/8" x 3/4" h braces to the full length of braces #3 and #11. This is where I concluded the tops were slipping in the K tester. Note: Music wire exerts .020" down pressure.	.25 .50 1.0	.016/.014 .033/.030 .065/.063	.011/.012 .023/.024 .055/.050	@ 2# .006 x 10 = .060  @ 4# .0125 x 5 = .0625	
#12ST-1-1 After trimming braces first reading: K @ 2# .024 x 10 = .140 4# .026 x 5 = .130 --- Impossible! Everything is too loose. The top must be slipping in the fixture. Recheck, using double backed tape and many clamps.	.25 .50 1.0	.023/.021 .045/.042 .086/.090	.018/.014 .038/.028 .076/.061	recheck @ 2# .013 x 10 = .130  @ 4# .025 x 5 = .125	
#12ST-1 Top Thursday, February 20, 1975 Original K of top .76 top .89 bottom					

TECHNICIAN \_\_\_\_\_

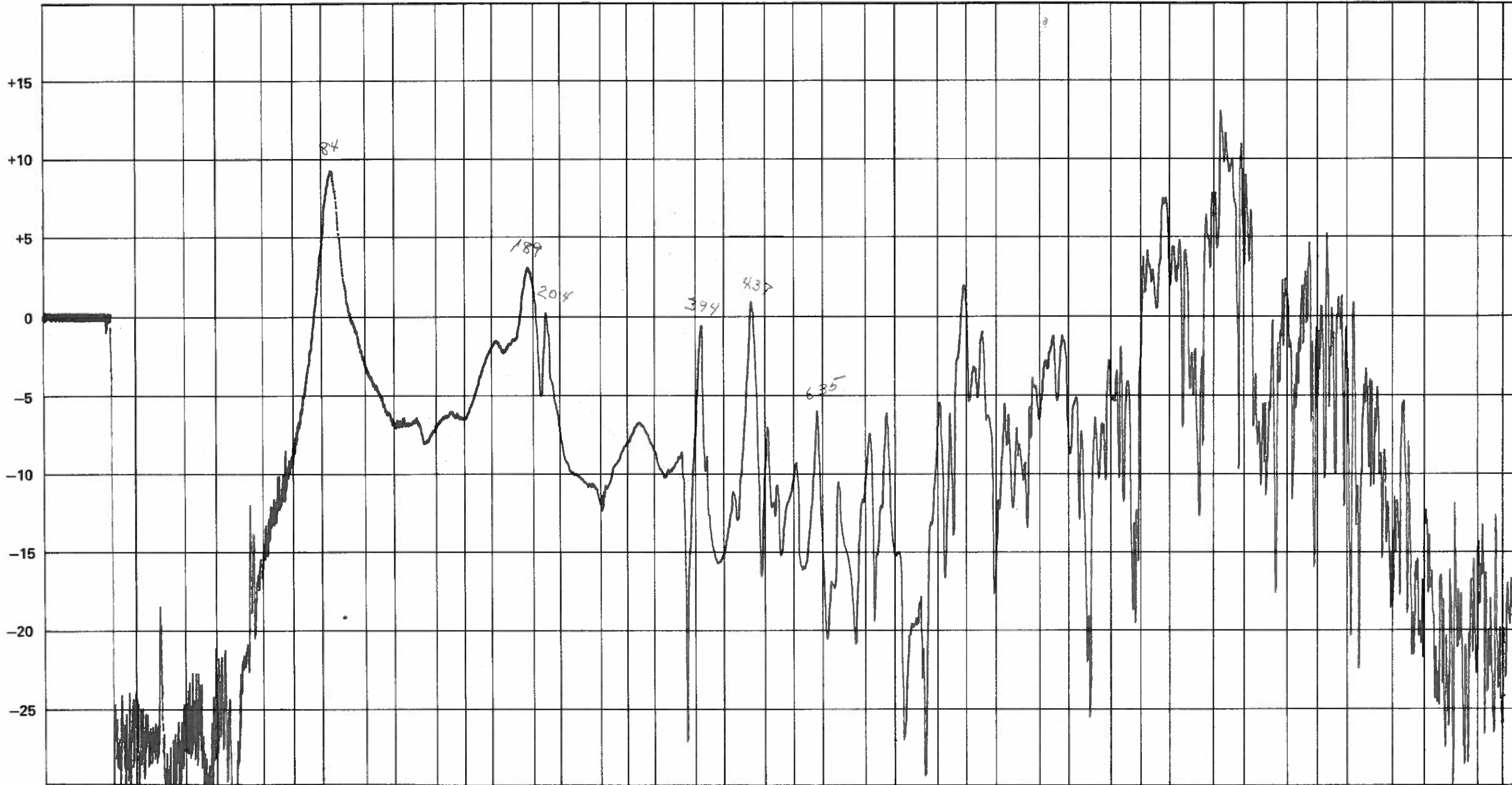
DATE 3/21/75

DESCRIPTION Mike 4" from hole

GUITAR NUMBER Graphite 12ST-1-8

Strings in tune

db



Hz 30.0 REF  
 E 41.2  
 G 49.  
 A 55.  
 C 65.4  
 D 73.4  
 E 82.4  
 G 98.  
 A 110.  
 C 130.8  
 D 146.8  
 E 164.8  
 G 196.  
 A 220.  
 C 261.6  
 D 293.7  
 E 329.6  
 G 392.  
 A 440.  
 C 523.3  
 D 587.3  
 E 659.3  
 G 784.  
 A 880.  
 C 1046.5  
 D 1174.7  
 E 1318.5  
 G 1568.  
 A 1760.  
 C 2093.  
 D 2349.3  
 E 2637.  
 G 3136.  
 A 3520.  
 C 4186.  
 D 4698.6  
 E 5274.  
 G 6271.8  
 A 7040.  
 C 8372.  
 9000. REF  
 D 9397.2

TECHNICIAN \_\_\_\_\_

DATE 3/21/75

DESCRIPTION Graphite 125T-1-8 (black) vs. Martin D12 (green)  
strings in tuner - Mike 4" from hole - take note when looking at the output

GUITAR NUMBER 125T-1-8  
compared with Martin D12

db

