

#31 - DESCRIPTION

a/e, blue
 Model #1687-8, S/N 0031-88
 90° top, slim rim, leaves laminaced
 Top 145.5 - with holes 140.
 211. with bridge and bracing
 Bridge 15.9 - with retainer 18.7
 Braces: 1 - 8.5 6 - 2.6
 2 - 3.1 7 - 5.0
 3 - 5.1 8 - 3.1
 4 - 2.4 9 - 8.4 *41.6*
 5 - 3.4 Bridge brace 4.2

Rim with edging 70.2, thin rim

3/29/76

Top only, with bridge, bridge brace and bracing.

	RL	SN	K	F5
.25	.015/.014	.009/.008	.063	
.50	.030/.029	.018/.016		
1.0	.061/.058	.038/.034		

#31-3

7/15/76

Added maximum of 1/32 laminac from 5 to 9 o'clock when viewed from bottom side of bowl. The attempt was to even out R/L and stiffen S.

Do - check numbers, tape, knob movement, sound, sparkles on back and rim, wood glo finish, etc.

not yet measured

#31-2

7/2/76

Add heel reinforcement, 3" finger, new battery cover and location. Filled rim with laminac.

.25	.019/.017	.011/.009	.065	
.50	.039/.035	.022/.019		
1.0	.078/.074 slide	.045/.038		

#31-1

6/2/76

Rerun numbers. Does not have rim reinforced, or 3" finger, or heel patch. Has old battery cover and location.

.25	.021/.019	.012/.009	<u>.075</u>	~88
.50	.041/.039	.024/.018		
1.0	.083/.078 <i>078</i>	.048/.038		

#31-1

4/1/76

Installed on guitar.

.25	.020/.019	.011/.010	.065	~85/88
.50	.040/.038	.024/.020		
1.0	.082/.079 slides	.049/.041		

31-3 see sound comparisons section 8/27/76
 7/6/76
 5/28/76

TECHNICIAN _____

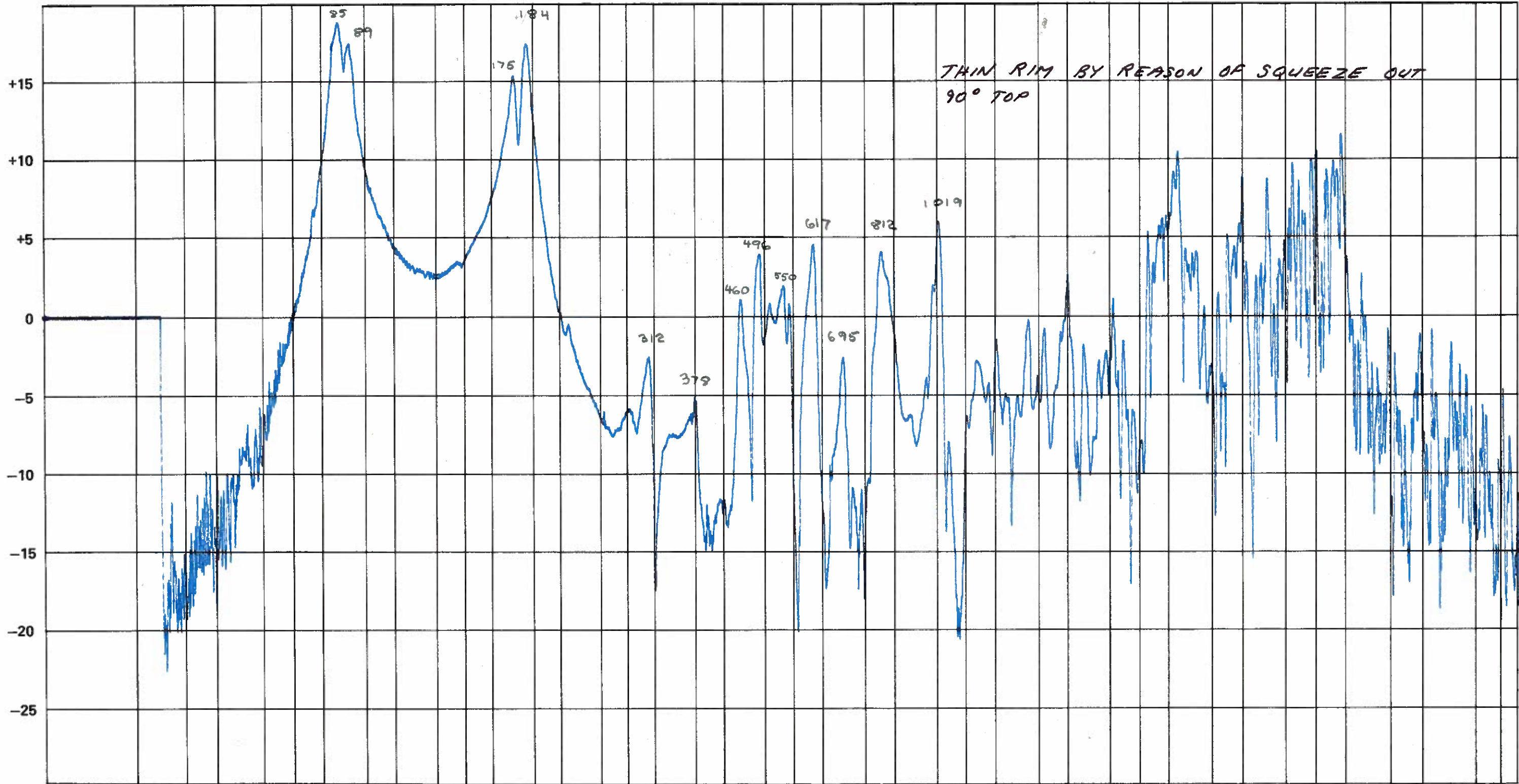
DATE 4/2/76

DESCRIPTION BLUE TOP

GUITAR NUMBER 31-1

TWIN

db



Hz 30. REF

E 41.2 G 49. A 55. C 65.4 D 73.4 E 82.4 G 98. A 110. C 130.8 D 146.8 E 164.8 G 196. A 220. C 261.6 D 293.7 E 329.6 G 392. A 440. C 523.3 D 587.3 E 659.3 G 784. A 880. C 1046.5 D 1174.7 E 1318.5 G 1568. A 1760. C 2093. D 2349.3 E 2637. G 3136. A 3520. C 4186. D 4698.6 E 5274. G 6271.8 A 7040. C 8372. 9000. REF D 9397.2

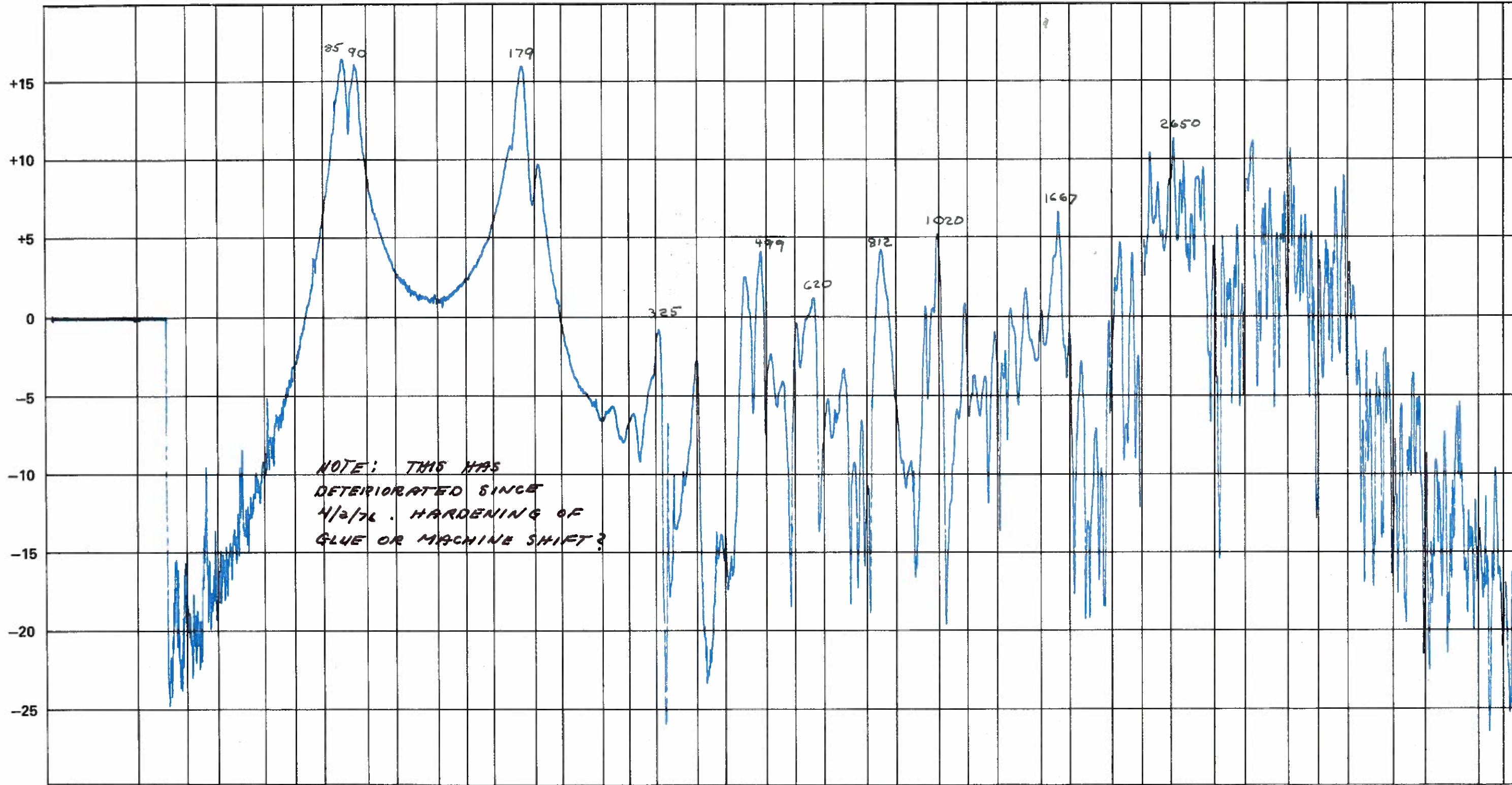
TECHNICIAN _____

DATE 4/8/76

DESCRIPTION 31

GUITAR NUMBER 31-1

db



NOTE: THIS HAS
 DETERIORATED SINCE
 4/2/76. HARDENING OF
 GLUE OR MACHINE SHIFT?

Hz 30. REF
 E 41.2 G 49. A 55. C 65.4 D 73.4 E 82.4 G 98. A 110. C 130.8 D 146.8 E 164.8 G 196. A 220. C 261.6 D 293.7 E 329.6 G 392. A 440. C 523.3 D 587.3 E 659.3 G 784. A 880. C 1046.5 D 1174.7 E 1318.5 G 1568. A 1760. C 2093. D 2349.3 E 2637. G 3136. A 3520. C 4186. D 4698.6 E 5274. G 6271.8 A 7040. C 8372. 9000. REF D 9397.2

TECHNICIAN _____

DATE 6/1/76

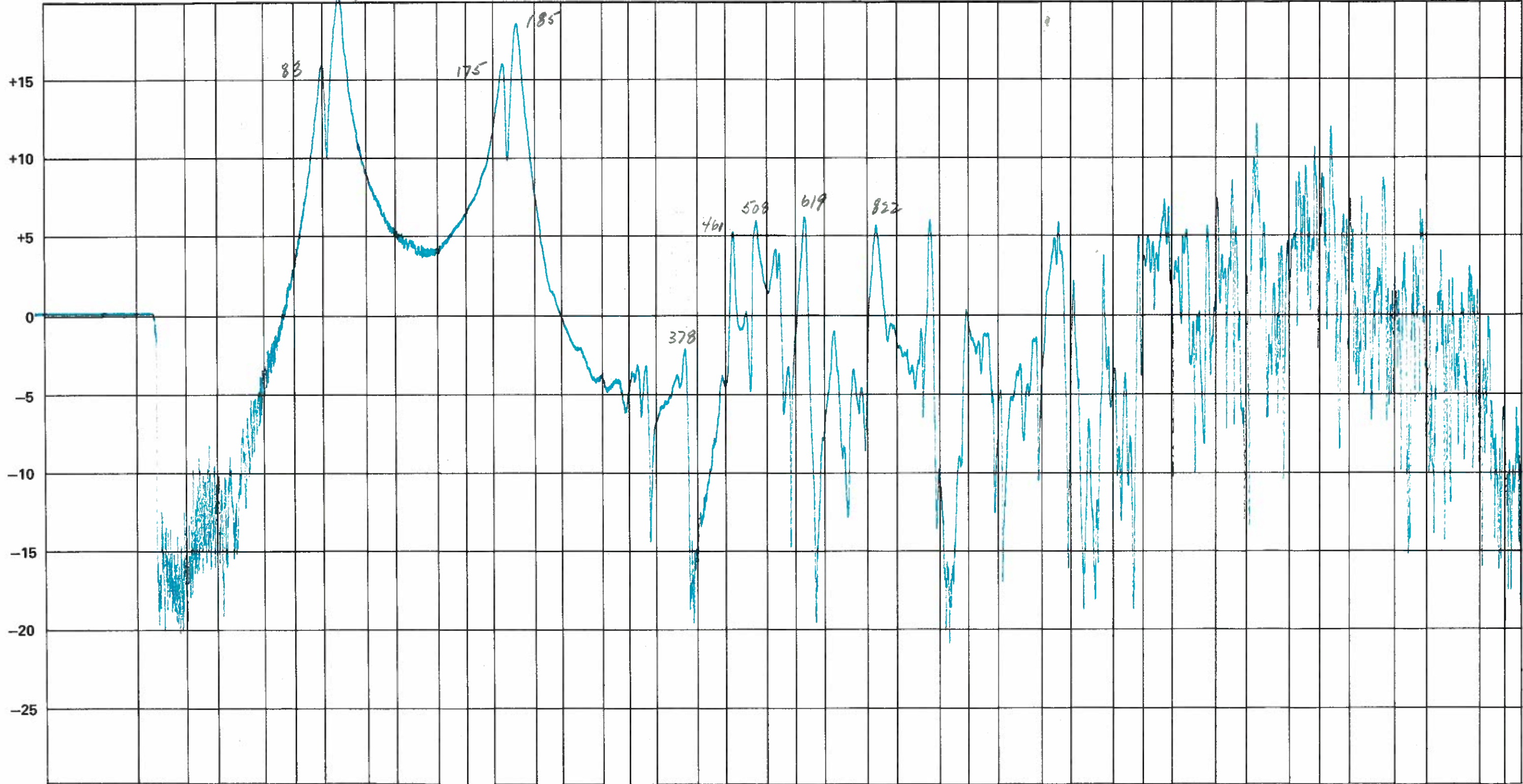
DESCRIPTION 3rd run

GUITAR NUMBER 31-1

*no finger
" part*

90° Top

db



Hz 30. REF

E	41.2	G	49.	A	55.	C	65.4	D	73.4	E	82.4	G	98.	A	110.	C	130.8	D	146.8	E	164.8	G	196.	A	220.	C	261.6	D	293.7	E	329.6	G	392.	A	440.	C	523.3	D	587.3	E	659.3	G	784.	A	880.	C	1046.5	D	1174.7	E	1318.5	G	1568.	A	1760.	C	2093.	D	2349.3	E	2637.	G	3136.	A	3520.	C	4186.	D	4698.6	E	5274.	G	6271.8	A	7040.	C	8372.	9000. REF	D	9397.2
---	------	---	-----	---	-----	---	------	---	------	---	------	---	-----	---	------	---	-------	---	-------	---	-------	---	------	---	------	---	-------	---	-------	---	-------	---	------	---	------	---	-------	---	-------	---	-------	---	------	---	------	---	--------	---	--------	---	--------	---	-------	---	-------	---	-------	---	--------	---	-------	---	-------	---	-------	---	-------	---	--------	---	-------	---	--------	---	-------	---	-------	-----------	---	--------