



#33 continued

#33-9  
6/2/76

Because of cup and dish of top this guitar has had bridge brace added.

	RL	SN	K	FF
.25	.016/.017	.010/.008	.066	~78
.50	.033/.034	.020/.017		
1.0	.066/.070 slides	.046/.035		

#33-8  
5/25/76

12 string cup – without string tension  
.085" above bridge  
.030" below bridge

Super low action.

Push lower right and upper left.

With string tension on overnight the top caved to 1/8" above the bridge and bubbled to .156" @ 5 1/2" below bridge.

#33-8  
5/13/76

Installed on guitar.  
The top is cupped above the bridge.

.25	.020/.020	.010/.009	.080
.50	.039/.040	.021/.017	
1.0	.081/.082+	.042/.034	

#33-8  
4/27/76

More on #3, 4, 5.

.25	.015/.015	.007/.007	.066
.50	.032/.031	.015/.014	
1.0	.063/.062	.031/.029	

#33-7  
4/27/76

Trimmed footprints on #3, 4, 5.

.25	.015/.016	.006/.007	.064
.50	.030/.030	.014/.014	
1.0	.062/.061	.028/.027	

#33-6  
4/22/76

Pylon fixed. Carved much wood off #3, 4 and 5 in the radius and footprint surface.

Between this dash number and the previous one, I took off one heck of a lot of wood and made little or no change in the numbers. I think that there was so much wood in the original braces that the top was insensitive to testing changes. It should get better soon.

.25	.016/.015	.006/.006	.062
.50	.030/.030	.013/.013	
1.0	.063/.060	.027/.026	

#33-5  
4/22/76

Filed down all the braces.

I think these numbers must reflect the broken pad of the pylon.

.25	.017/.017	.007/.007	.060
.50	.034/.033	.014/.014	
1.0	.069/.071	.029/.030	

(continued)

#33 continued

#33-4  
4/20/76

Filed the taper of #4 set in the north and also the taper of set #2, 3 and 5 in the south.

	RL	SN	K	FF
.25	.014/.015	.007/.006	.059	
.50	.031/.030	.013/.012		
1.0	.062/.061	.027/.025		

#33-3  
4/15/76

Planed the length of #3 and 5. Tapered #4 in north and #1 at extreme south.

.25	.016/.017	.007/.007	.058	
.50	.033/.032	.013/.015		
1.0	.066/.065	.029/.030		

#33-2  
4/15/76

Tapered ends of #2, 3, 4, 5 in south and sanded the length of set #3 and 5.

.25	.017/.016	.007/.006	.054	
.50	.032/.030	.014/.012		
1.0	.065/.061	.029/.025		

#33-1  
4/15/76

Filed #4 set quite hard from bridge south and small amount of length of #3 and 5.

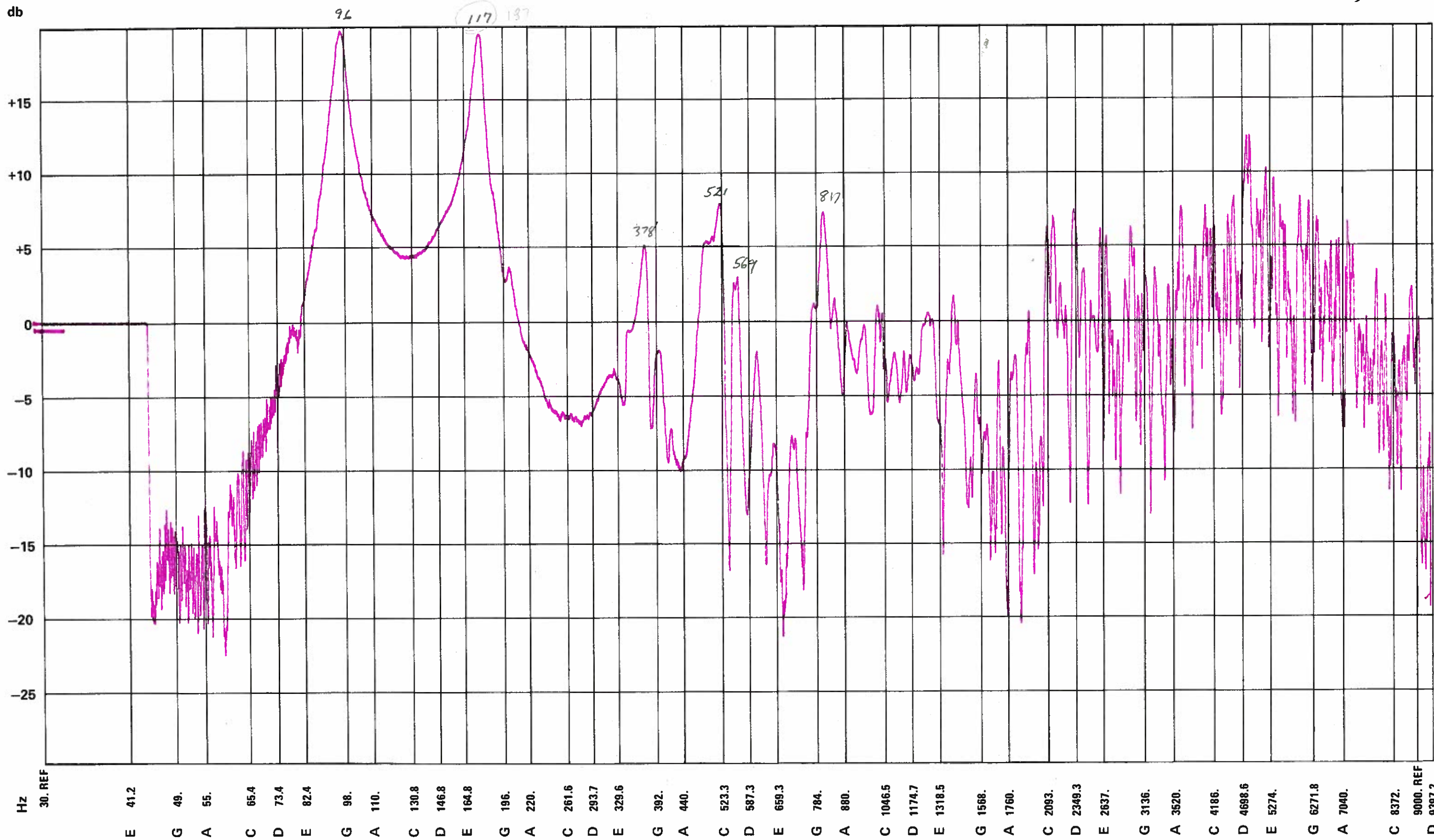
.25	.015/.015	.007/.007	.5375	
.50	.030/.030	.013/.014		
1.0	.064/.060	.028/.027		

TECHNICIAN JAR

DATE 7-13-76

DESCRIPTION \_\_\_\_\_

GUITAR NUMBER 33  
12 string



TECHNICIAN \_\_\_\_\_

DATE 4/1/77

DESCRIPTION \_\_\_\_\_

GUITAR NUMBER #33

db

