

#36 - DESCRIPTION

acoustic, Beige
Model #1189-7, S/N 0036-97

60° - top #8
154.8 grams before holes - 225.3 w/bridge and bracing.
Bridge 14.2 w/finish - 17.1 w/retainer.

Braces: 1 - 9.0 6 - 2.7
 2 - 3.1 7 - 5.0
 3 - 5.0 8 - 3.1
 4 - 2.7 9 - 9.0
 5 - 3.8 43.4

Bridge brace 4.5 grams
total (weighed) 42.5

Rim 80.7

#36-2

6/2/76

Installed on guitar (has .050" cup x .125" bubble
under tension).
Neck has angle of .037" at nut.

	RL	SN	K	FF
.25	.016/.016	.010/.009	.069	~97
.50	.030/.031	.019/.018		
1.0	.062/.063	.041/.035		

#36-1

5/10/76

Top only with bridge, braces and bridge brace.

.25	.014/.014	.008/.008	.058	
.50	.026/.028	.017/.017		
1.0	.053/.055	.034/.034		

*See Sound comparison section 8/27/76
5/28/76
11/29/76
12/16/76*

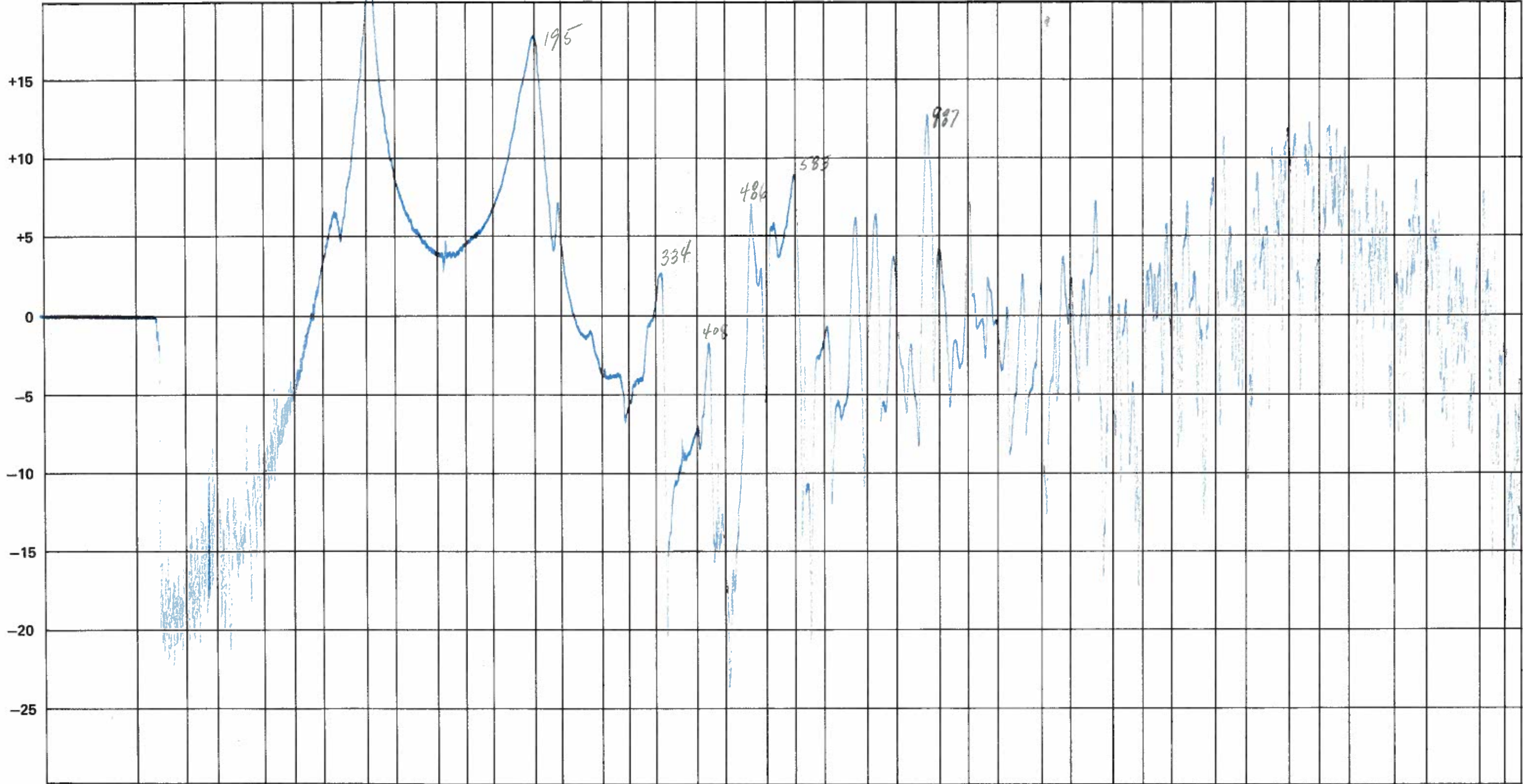
TECHNICIAN _____

DATE 6/1/76

DESCRIPTION 1st run

GUITAR NUMBER 36 - 1

db



Hz 30. REF
 E 41.2 G 49. A 55. C 65.4 D 73.4 E 82.4 G 98. A 110. C 130.8 D 146.8 E 164.8 G 196. A 220. C 261.6 D 293.7 E 329.6 G 392. A 440. C 523.3 D 587.3 E 659.3 G 784. A 880. C 1046.5 D 1174.7 E 1318.5 G 1568. A 1760. C 2093. D 2349.3 E 2637. G 3136. A 3520. C 4186. D 4698.6 E 5274. G 6271.8 A 7040. C 8372. 9000. REF 9397.2

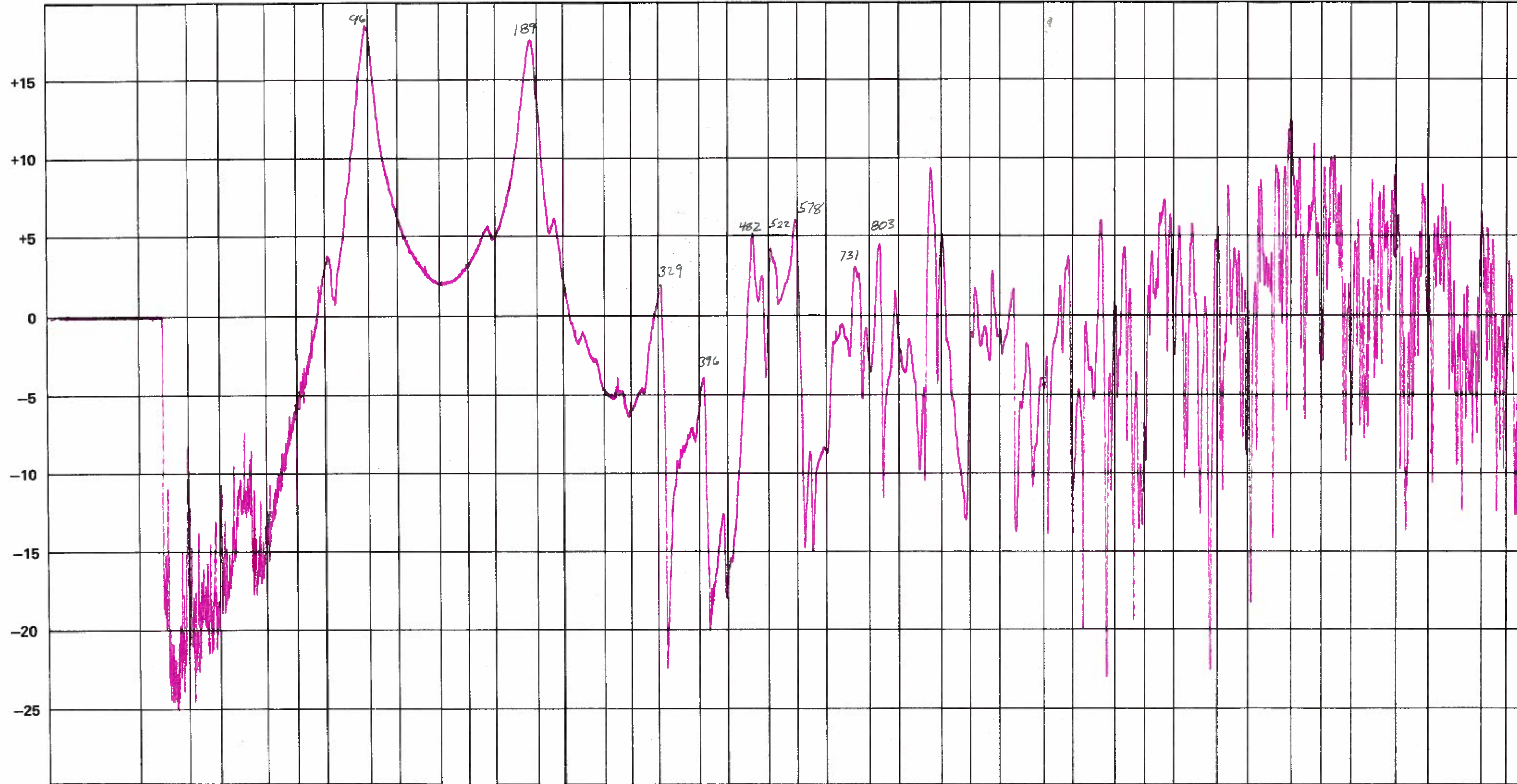
TECHNICIAN _____

DATE 9/76

DESCRIPTION _____

GUITAR NUMBER 36-2

db



Hz 30. REF

E	41.2	G	49.	A	55.	C	65.4	D	73.4	E	82.4	G	96.	A	110.	C	130.8	D	146.8	E	164.8	G	196.	A	220.	C	261.6	D	293.7	E	329.6	G	392.	A	440.	C	523.3	D	587.3	E	659.3	G	784.	A	880.	C	1046.5	D	1174.7	E	1318.5	G	1568.	A	1760.	C	2093.	D	2349.3	E	2637.	G	3136.	A	3520.	C	4186.	D	4698.6	E	5274.	G	6271.8	A	7040.	C	8372.	9000. REF	D	9397.2
---	------	---	-----	---	-----	---	------	---	------	---	------	---	-----	---	------	---	-------	---	-------	---	-------	---	------	---	------	---	-------	---	-------	---	-------	---	------	---	------	---	-------	---	-------	---	-------	---	------	---	------	---	--------	---	--------	---	--------	---	-------	---	-------	---	-------	---	--------	---	-------	---	-------	---	-------	---	-------	---	--------	---	-------	---	--------	---	-------	---	-------	-----------	---	--------