

#46 - DESCRIPTION

		RL	SN	K	FF	
<p>Model #1687-7, S/N 0046-90</p> <p>7/8/76</p> <p>60° - top #13</p> <p>148 grams before holes</p> <p>Bridge 13.8 with finish - 16.8 w/retainer</p> <p>Braces: 1 - 8.8 6 - 2.7</p> <p> 2 - 3.5 7 - 5.3</p> <p> 3 - 5.3 8 - 3.5</p> <p> 4 - 2.7 9 - 8.8 = 44.3</p> <p> 5 - 3.7 Bridge brace 4.2</p> <p> Total weighed 44 grams</p> <p>Top only with bridge, braces, bridge brace.</p> <p>Rim</p>		.25	.014/.016	.009/.009	.063	
		.50	.030/.030	.019/.018		
		1.0	.060/.061	.040/.037		
<hr/>						
<p>#46-2</p> <p>10/8/76</p> <p>1st 6th</p> <p>.015 .025</p> <p>.062 .085</p>						
<p>#46-1</p> <p>9/24/76</p> <p>Top #13 installed on bowl.</p>		.25	.019/.019	.011/.009	.071	
		.50	.039/.038	.022/.019	~90	
		1.0	.078/.078	.044/.038		

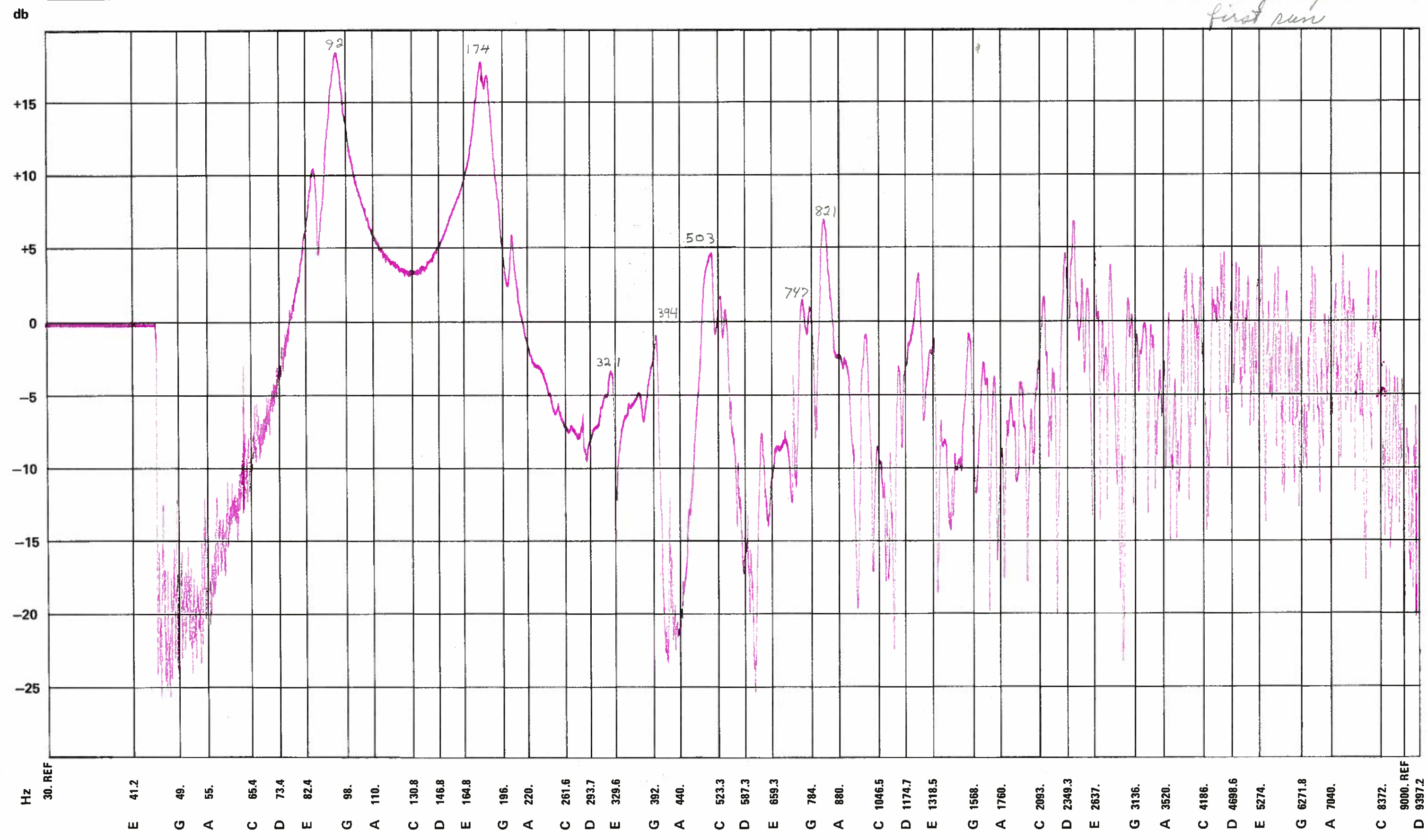
See round comparison section 12/16/76

TECHNICIAN Dow

DATE Oct 9

DESCRIPTION Beige - A/e - 5/W

GUITAR NUMBER 0046
strings tight
first run



TECHNICIAN Don

DATE Oct 3

DESCRIPTION Beige - ap - sh

GUITAR NUMBER 0046
Strings Loose

