

#59 - DESCRIPTION

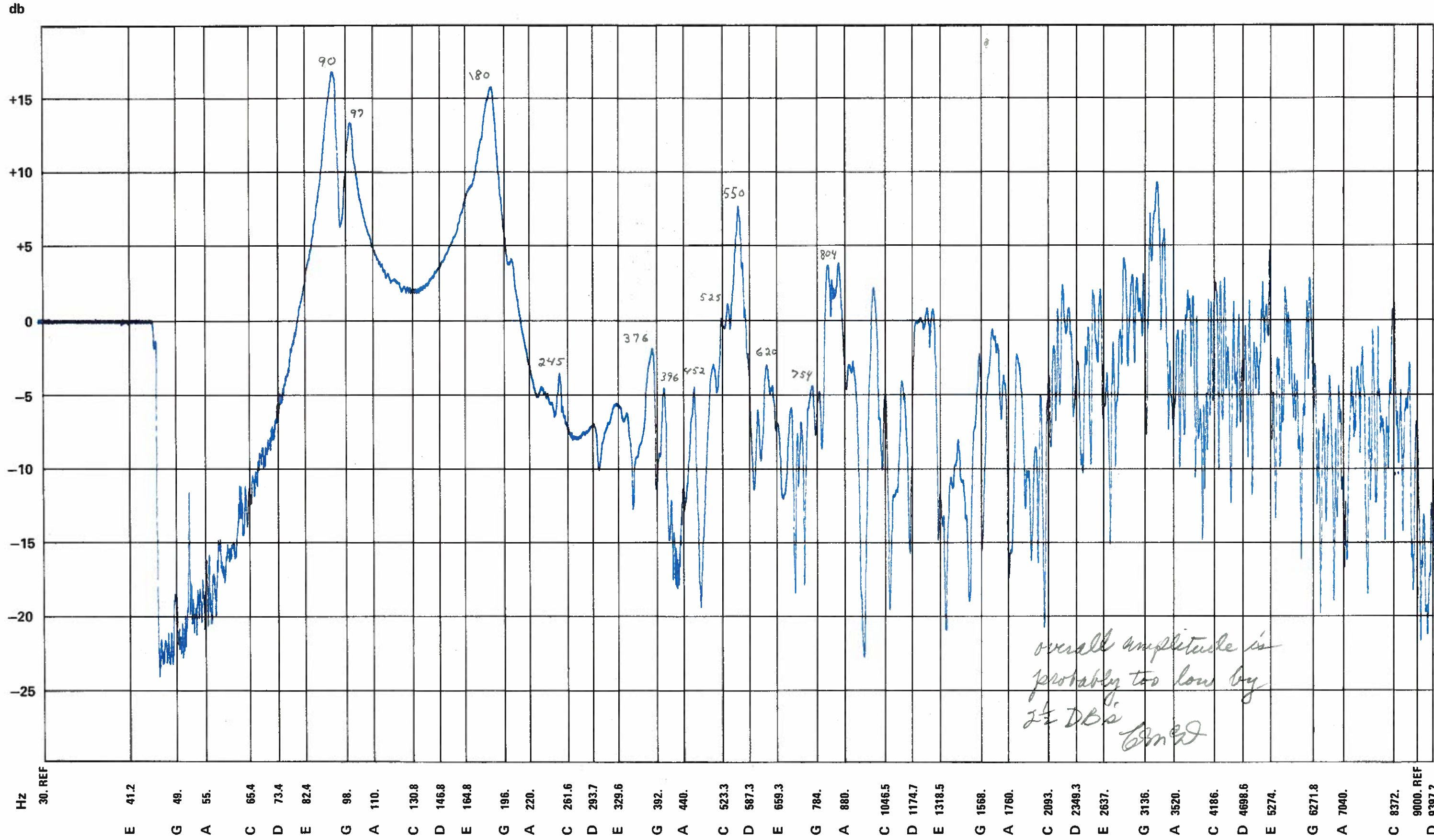
		RL	SN	K	FF
a/e, wide neck,	10/19/76				
Model #1689-8, S/N 0059-					
60° - top #26	.25	.019/.020	.009/.009	.070	
154.8 before holes	.50	.039/.041	.019/.019		
Bridge 12.6 w/finish - 16.5 with retainer	1.0	<u>.079/.086</u>	.040/.039		
Braces: 1 - 8.4 6 - 2.6					
2 - 3.3 7 - 5.3					
3 - 5.3 8 - 3.3					
4 - 2.6 9 - 8.4 = 4.1					
5 - 3.9 Bridge brace 4.2					
Top only with bridge, braces, and bridge brace.					
<hr/>					
#59-2					
11/19/76					
1st 6th					
.017 .020					
.068 .093					
#59-1					
10/27/76					
Installed on guitar. Location holes only - no flowers.	.25	.019/.021	.011/.010	.072	
Sound test at Moosup - FF 103.	.50	.040/.041	.023/.020		
Rim thickness (checked 3x) .982", .987", .978"	1.0	.082/.087	.048/.041		
(less .830" for bullet).					
 <i>See round comparison section 11/29/76</i>					

TECHNICIAN D. Johnson

DATE 11-29-76

DESCRIPTION Adams 1689-8

GUITAR NUMBER 0059-90 ⁹³



overall amplitude is
probably too low by
 $2\frac{1}{2}$ DB's
C.M.E.D.