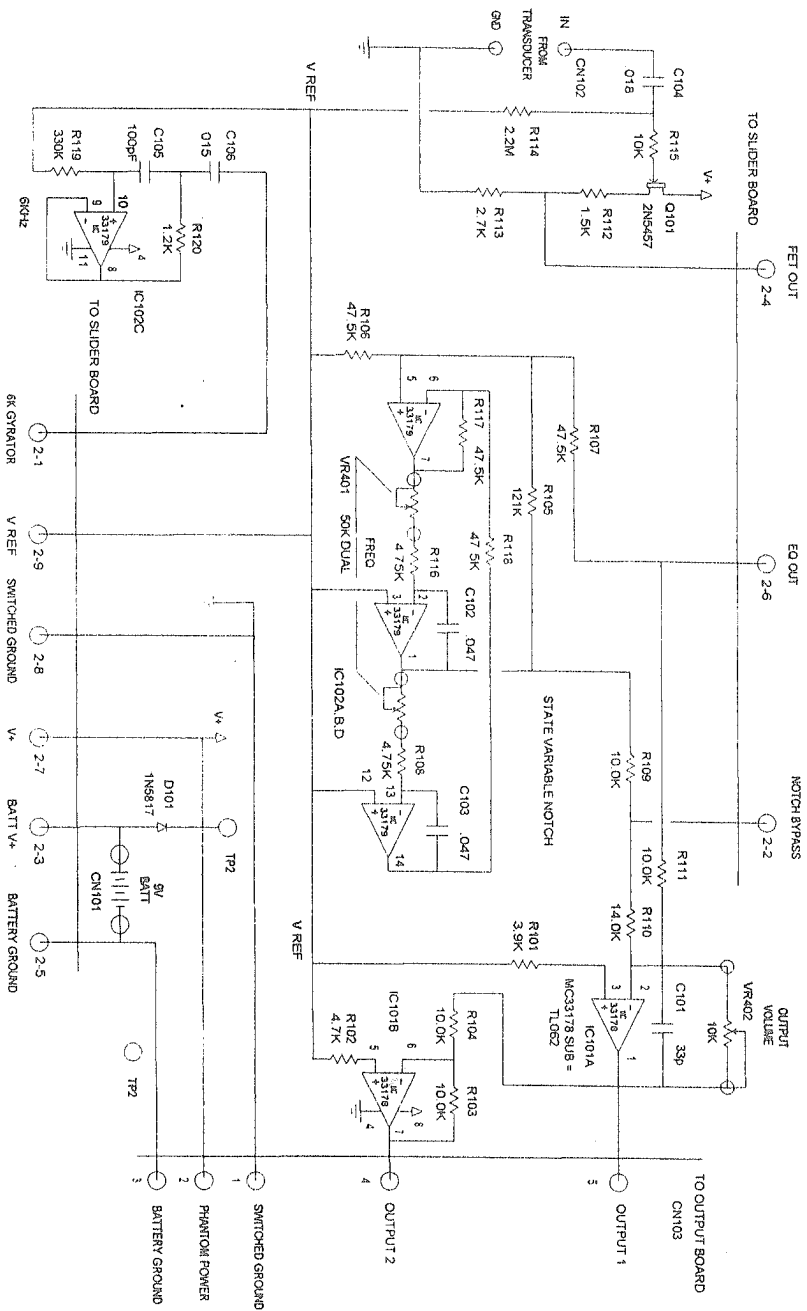
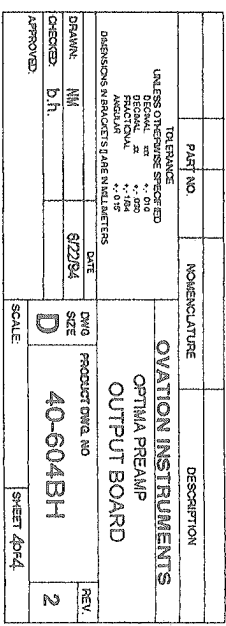


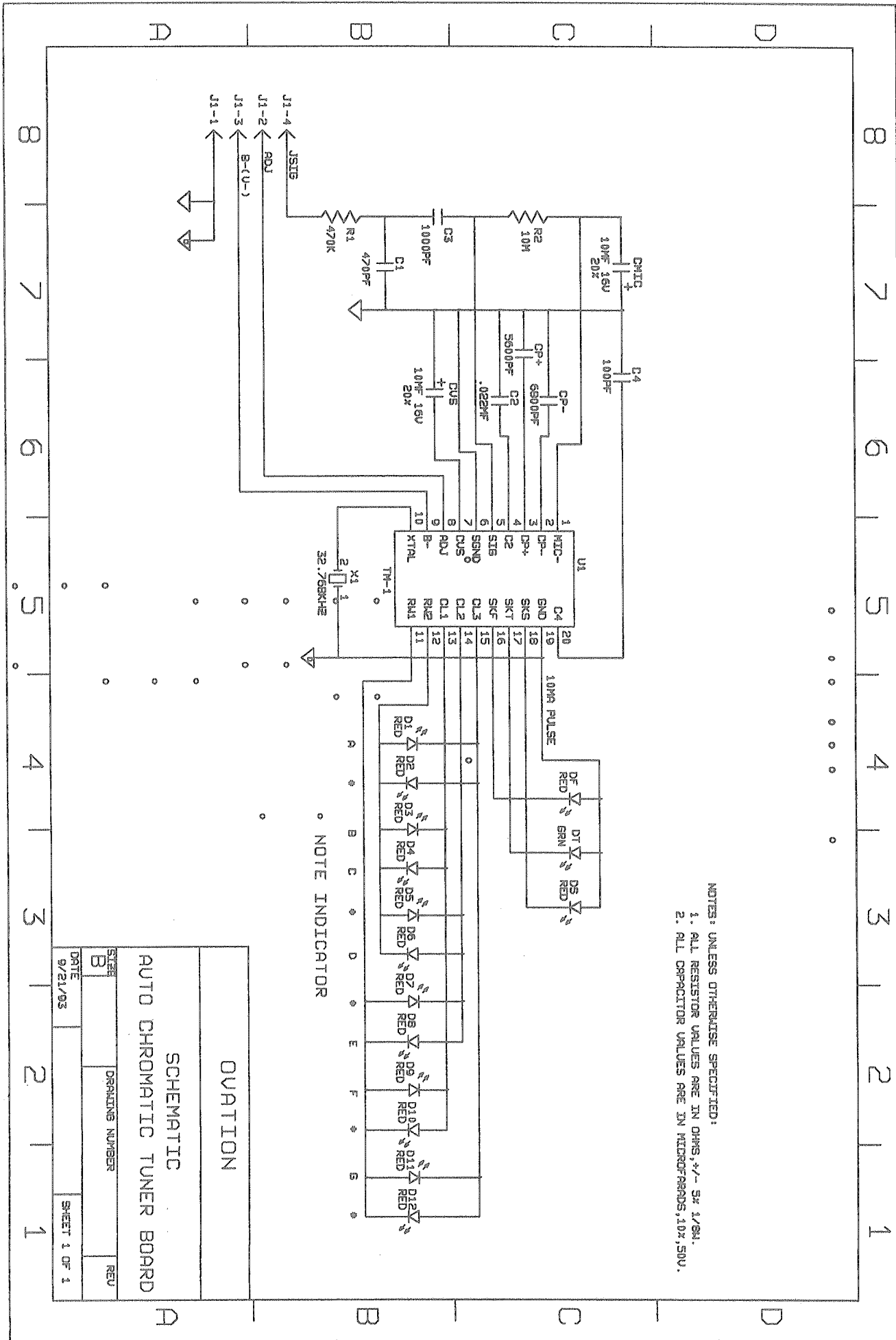
# INPUT BOARD



REVISIONS																			
LTR	ECN	DESCRIPTION	REV																
<table border="1"> <tr> <td colspan="2"> <b>UNLESS OTHERWISE SPECIFIED</b>            DIMENSIONS ARE IN INCHES            DECIMAL INCHES            FRACTIONS            DIMENSIONS ARE IN MILLIMETERS         </td><td colspan="2"> <b>DATE</b>            6/22/94         </td></tr> <tr> <td colspan="2"> <b>DRAWN:</b> N.H.  <b>CHECKED:</b> b.h.  <b>APPROVED:</b> </td><td colspan="2"> <b>DWG SIZE</b>            D         </td></tr> <tr> <td colspan="2"> <b>PRODUCT DWG NO</b>            40-601BH         </td><td colspan="2"> <b>REV</b>            2         </td></tr> <tr> <td colspan="2"> <b>SCALE:</b> </td><td colspan="2"> <b>SHEET 1 OF 4</b> </td></tr> </table>				<b>UNLESS OTHERWISE SPECIFIED</b> DIMENSIONS ARE IN INCHES DECIMAL INCHES FRACTIONS DIMENSIONS ARE IN MILLIMETERS		<b>DATE</b> 6/22/94		<b>DRAWN:</b> N.H. <b>CHECKED:</b> b.h. <b>APPROVED:</b>		<b>DWG SIZE</b> D		<b>PRODUCT DWG NO</b> 40-601BH		<b>REV</b> 2		<b>SCALE:</b>		<b>SHEET 1 OF 4</b>	
<b>UNLESS OTHERWISE SPECIFIED</b> DIMENSIONS ARE IN INCHES DECIMAL INCHES FRACTIONS DIMENSIONS ARE IN MILLIMETERS		<b>DATE</b> 6/22/94																	
<b>DRAWN:</b> N.H. <b>CHECKED:</b> b.h. <b>APPROVED:</b>		<b>DWG SIZE</b> D																	
<b>PRODUCT DWG NO</b> 40-601BH		<b>REV</b> 2																	
<b>SCALE:</b>		<b>SHEET 1 OF 4</b>																	
<b>PART NO.</b> NONE/ENCLOSURE		<b>DESCRIPTION</b> OPTIMA INSTRUMENTS OPTIMA PREAMP INPUT BOARD																	

REVISIONS			
LTR	ECN	DESCRIPTION	REV





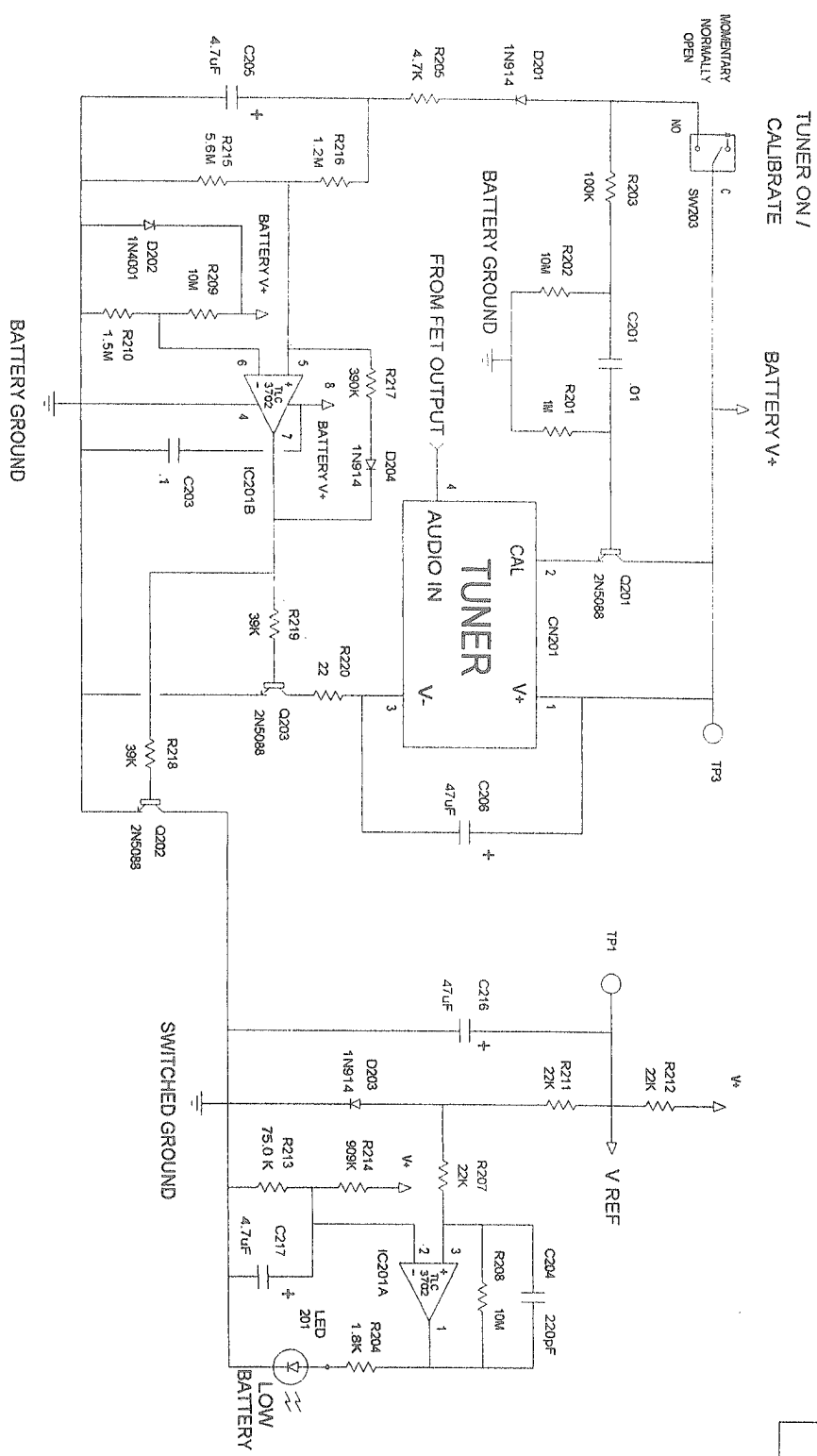
NOTES: UNLESS OTHERWISE SPECIFIED:

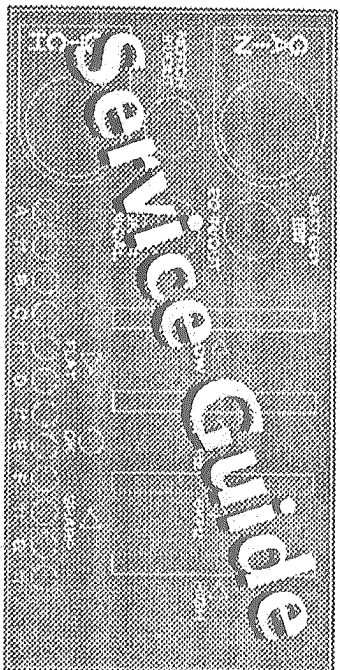
- 1. ALL RESISTOR VALUES ARE IN OHMS, \*-S: 1/8W.
- 2. ALL CAPACITOR VALUES ARE IN MICROFARADS, 10K, 50V.

OVATION	
SCHEMATIC	
AUTO CHROMATIC TUNER BOARD	
DATE	DRAWING NUMBER
9/21/93	B
SHEET 1 OF 1	REV

REVISIONS		
LTR	ECN	DESCRIPTION

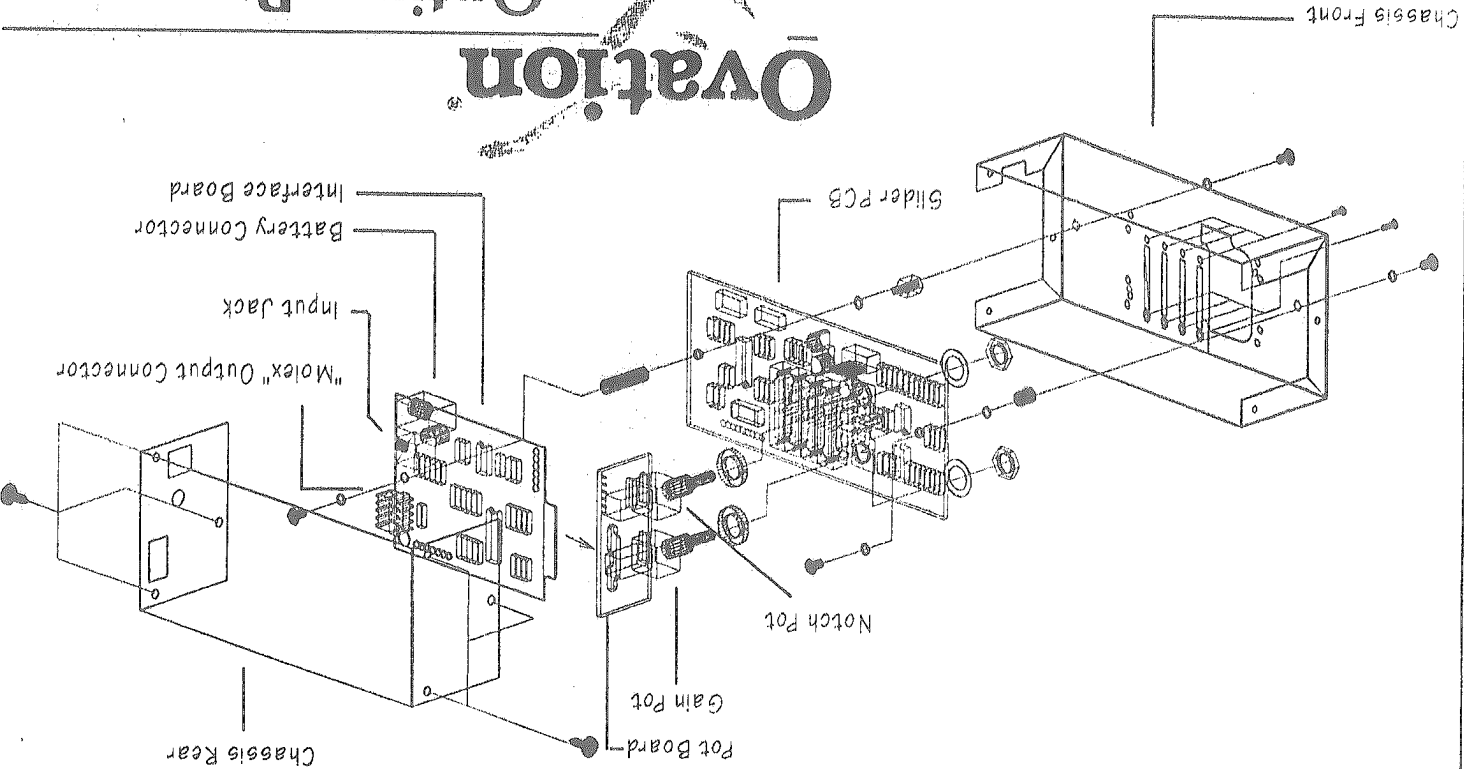
# SLIDER BOARD





# Optima® Preamp

Ovation Part #990149-A



# Optima Preamp Exploded View